

BUILDER'S CHOICE

▶ GRAND

DOUGLASS SQUARE

Champaign, Ill.

THE OLD AFFORDABLE-housing model is being thrown out as thoughtfully designed homes for low-income families are fast replacing the drab, concrete boxes of the 1960s and 1970s. Douglass Square reflects that shift.

Situated near downtown Champaign, Ill., the 50-unit, mixed-income project sits on a nine-acre infill parcel that previously was home to barracks-style affordable public housing that was "just tossed on the site," according to architect Jeff Bone. "Our goal was to create a neighborhood."

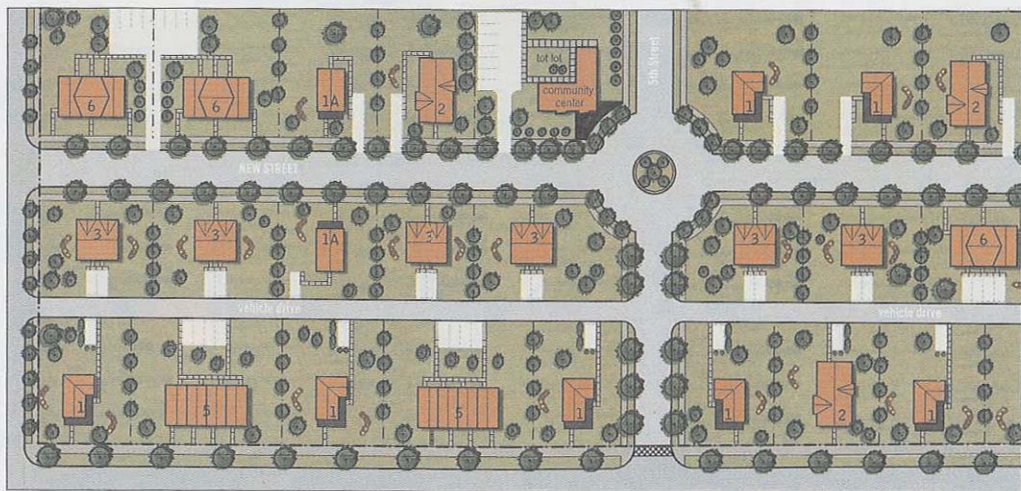
To do this, Bone and project architect Jack Schroeder stipulated rear service alleys and parking. This move eliminated the need for front curb cuts and created pedestrian-friendly sidewalks unbroken by cars. They then designed a series of small houses—single-family, duplexes, townhouses, and four-plexes—that are marked by simple forms and a lively color palette.

Though clearly rooted in Midwestern regional vernacular, the lines are clean and

well defined. Steep gable roofs and front porches give each home a small-town feel.

In addition to green spaces adjacent to the houses, a centrally located community building provides play areas as well as common spaces and laundry facilities for residents.—*N.F.M.*

(see page 114)



Category: Affordable-housing community; **Entrant/Architect:** Landon Bone Baker, Chicago; **Builder:** Frank Baxter General Contractor, Fort Madison, Iowa; **Developer:** Brinshore Development, Northbrook, Ill.; **Landscape architect:** McKay Landscape Architects, Chicago